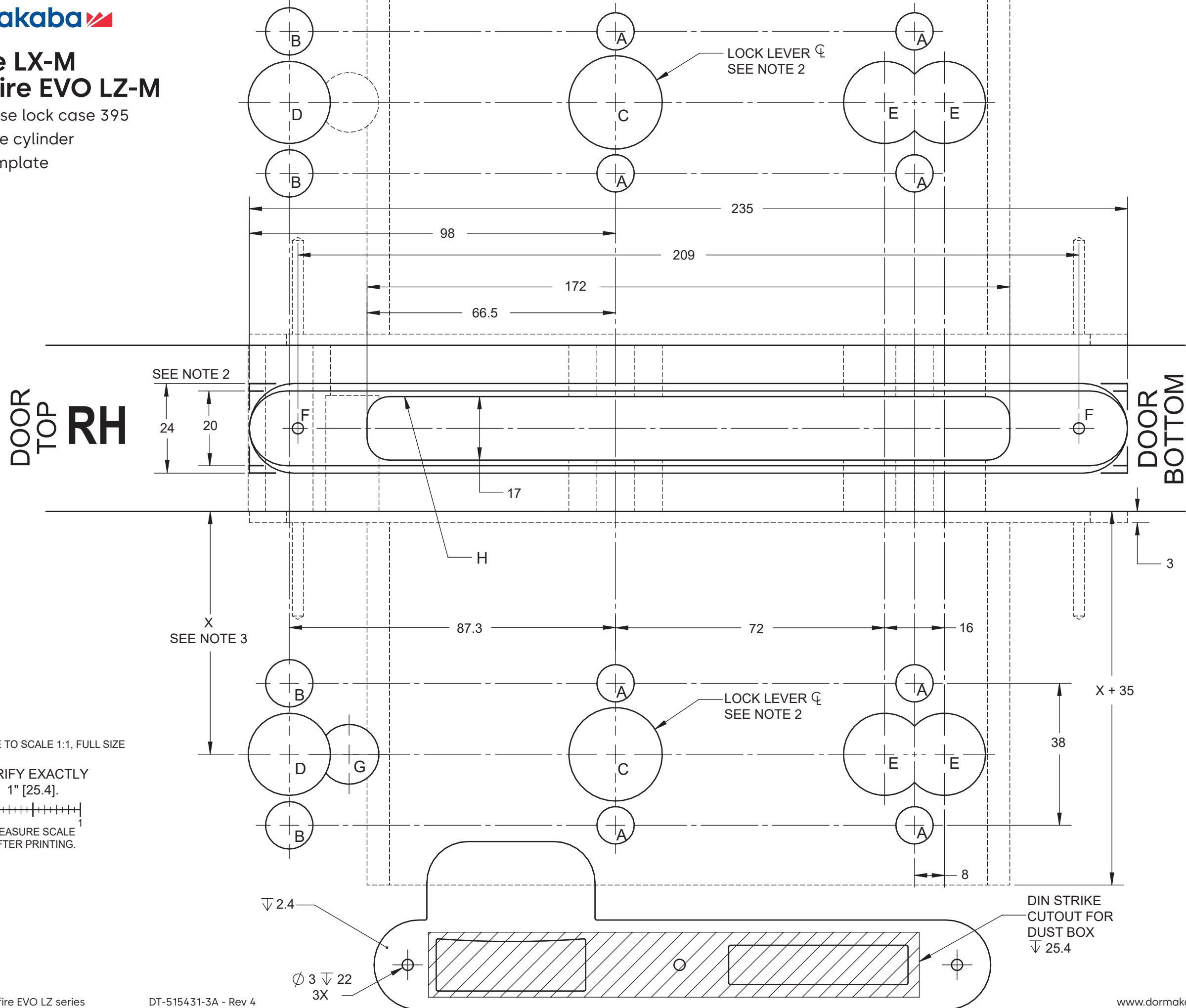


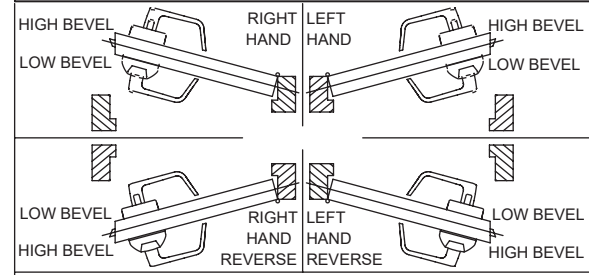
# Saffire LX-M & Saffire EVO LZ-M

Euro mortise lock case 395  
Euro profile cylinder  
Drilling template

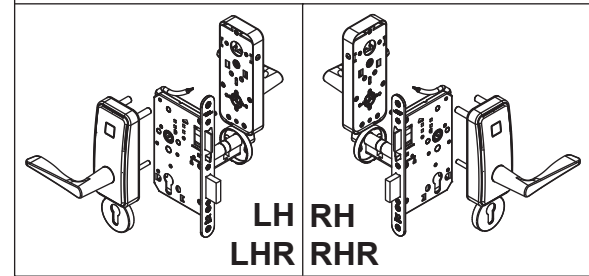


| HOLE ID | DIM [mm] | COMMENTS  |
|---------|----------|-----------|
| A       | ∅ 10     | *         |
| B       | ∅ 12.5   | *         |
| C       | ∅ 25     | *         |
| D       | ∅ 22     | *         |
| E       | ∅ 22     | *         |
| F       | ∅ 3      | ∇ 22      |
| G       | ∅ 16     | TO WALL H |

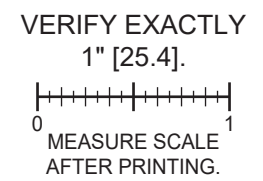
\* UNLESS OTHERWISE NOTED, DRILL HALF DOOR THICKNESS ON BOTH SIDES.



- NOTES:
- FOR DIMENSIONS AND TOLERANCES REFER TO CORRESPONDING DOOR PREPARATION DRAWING IP-516431-3.
  - TO CUT OUT AS PER FOREND DIMENSION (20 OR 24 mm, ROUND OR SQUARE ENDS).
  - BACKSET SHOWN FOR REFERENCE ONLY. ADJUST BACKSET AS PER LOCK CASE.
  - SYMBOLS:
    - ∇ DEEP
    - ⊕ CENTERLINE OF DOOR
    - ∅ DIAMETER
  - ALL DIMENSIONS ARE IN MILLIMETERS [mm].

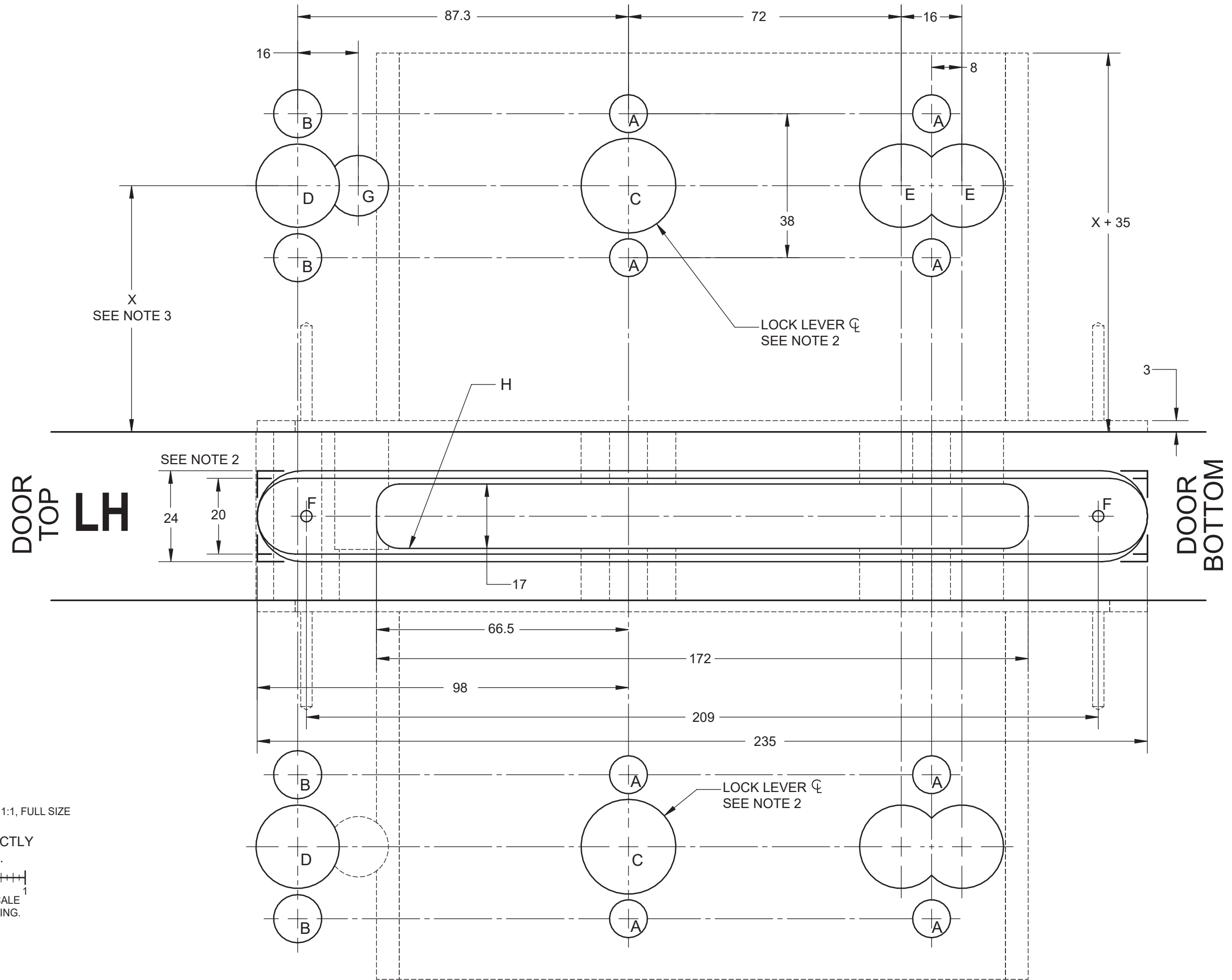


TEMPLATE TO SCALE 1:1, FULL SIZE



**WARNING**

- To verify lock coverage and door operation meets expectations, dormakaba strongly recommends completing a full door mockup. This will ensure that all necessary products and parts for a successful installation are included.
- Always validate that you have selected the correct template for specific lock model being installed. The same lock model can be offered with different locking device options.
- Always validate after printing to confirm the dimensions listed on the drawing have printed on a 1:1 scale.
- If you have any questions, please contact your local sales representative or authorized reseller.



TEMPLATE TO SCALE 1:1, FULL SIZE

VERIFY EXACTLY  
1" [25.4].

